

ACCESSORIES

FOR CARD FRAMES

APW President offers a variety of accessories for use with Card Frames. These accessories enable Design Engineers and System Integrators to complete their product packaging in conformity with the latest practices followed worldwide.

Card Guides

Single piece moulded Card Guides are available in lengths suitable for 160mm and 220mm length PCB's. For other lengths three-part Card Guides are available. For high vibration environments APW President offers anti-vibration Card Guides.

Ordering Information

Guide, PCB MOD2 148mm Polyco	83-4140-1
Guide, PCB MOD2 148mm Polyco, GF	83-4140-2
Guide, PCB MOD2 208mm Polyco, GF	83-4150-2
Guide, PCB MOD3 148mm Noryl	83-4180-3
Guide, PCB MOD3 208mm Noryl	83-4190-3
Guide, PCB screw-on, 148mm Polyco	83-1723
Guide, PCB screw-on, 208mm Polyco	83-1724



Card Guides

Threaded Strips

Threaded Strips slide into special grooves in the width profiles to allow fixing of Front Panels, Facias and Modules. A variety of Threaded Strips having M2.5 and M3.0 tapped holes are available to suit different applications.

Ordering Information

Type	Width				
	21T	42T	63T	81T	84T
M2.5, 6.0X2.0	86-1121	86-1142	86-1163	86-1181	86-1184
M2.5, 5.0X1.5	86-1121-2	86-1142-2	86-1163-2	86-1181-2	86-1184-2
M2.5, 5.5X1.5	86-1121-3	86-1142-3	86-1163-3	86-1181-3	86-1184-3
M3.0, 6.0X2.0	86-1421	86-1442	86-1463	86-1481	86-1484



Threaded Strips

Pull-Out Handles

Pull-Out Handles are supplied in sets with fixing hardware. They are available in natural anodised and black anodised finish. Fixing hole diameters are M3.5.

For sizes from 3U onwards handles are formed from a common aluminium extrusion bent at the two ends.

Ordering Information

Style of Anodising	Height			
	2U	3U	4U	5U
NATURAL	29-9302-10	29-9503-3	29-9504-3	29-9505-3
BLACK	29-9302-11	29-9503-4	29-9504-4	29-9505-4

Style of Anodising	Height			
	6U	7U	8U	9U
NATURAL	29-9506-3	29-9507-3	29-9508-3	29-9509-3
BLACK	29-9506-4	29-9507-4	29-9508-4	29-9509-4



Pull-out Handles

Front and Rear Panels

Front and Rear Panels are available for all standard models of Card Frames. These panels can be of the Screw-On type or they can be hinged to open either downwards or sideways. These panels are made of 2.5mm thick aluminium sheets and are anodised.

Prices of Front and Rear Panels include all fixing hardware, such as knurled screws, threaded strips etc.

Ordering Information

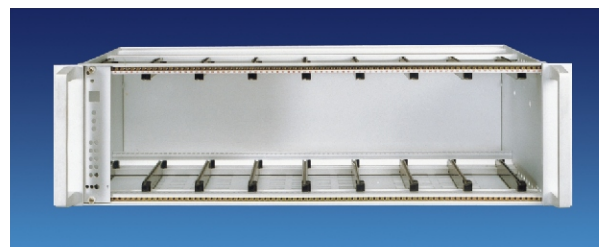
Height	Width				
	21T	42T	63T	81T	84T
2U	29-1322-Y	29-1324-Y	29-1325-Y	29-1326-Y	29-1327-Y
3U	29-1332-Y	29-1334-Y	29-1335-Y	29-1336-Y	29-1337-Y
4U	29-1342-Y	29-1344-Y	29-1345-Y	29-1346-Y	29-1347-Y
5U	29-1352-Y	29-1354-Y	29-1355-Y	29-1356-Y	29-1357-Y
6U	29-1362-Y	29-1364-Y	29-1365-Y	29-1366-Y	29-1367-Y
7U	-	-	-	-	29-1377-Y
8U	-	-	-	-	29-1387-Y
9U	-	-	-	-	29-1397-Y

To specify Front / Rear Panels style, use the suffix 'Y' as below

- Y=1 for Front Panels, Screw-on
- Y=2 for Rear Panels, Screw-on
- Y=3 for Front Panels, Hinged downwards
- Y=4 for Front Panels, Hinged sideways, Leftside
- Y=5 for Front Panels, Hinged sideways, Rightside



Front Panel



Rear Panel

Top and Bottom Covers

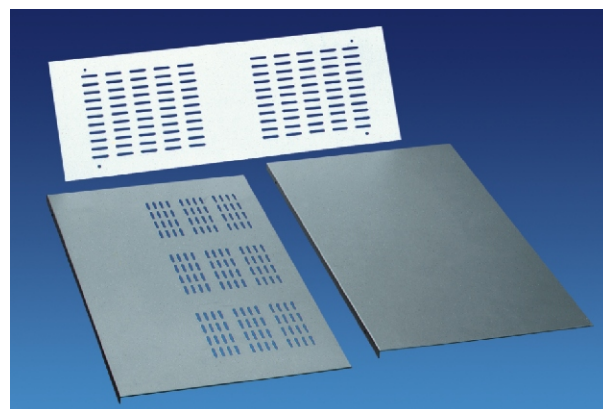
Top and Bottom Covers are available - either plain or with ventilation slots. Choice of finish is either anodised or powder coated. They are made from 0.9mm aluminium sheets.

Ordering Information

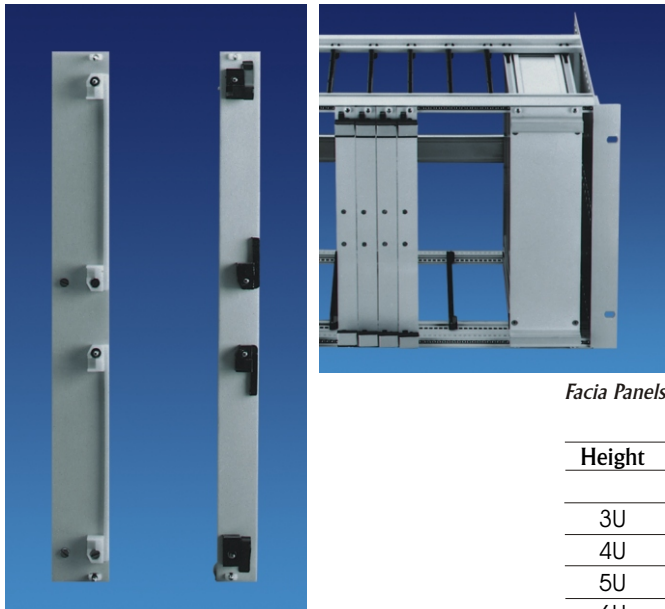
Style	Depth	Width			
		81T	84T	81T	84T
		Anodised		Painted	
Plain	180	29-2061-00	29-2071-00	29-2061-0Y	29-2071-0Y
	240	29-2064-00	29-2074-00	29-2064-0Y	29-2074-0Y
	300	29-2066-00	29-2076-00	29-2066-0Y	29-2076-0Y
	360	29-2068-00	29-2078-00	29-2068-0Y	29-2078-0Y
Slotted	180	29-2061-10	29-2071-10	29-2061-1Y	29-2071-1Y
	240	29-2064-10	29-2074-10	29-2064-1Y	29-2074-1Y
	300	29-2066-10	29-2076-10	29-2066-1Y	29-2076-1Y
	360	29-2068-10	29-2078-10	29-2068-1Y	29-2078-1Y

To specify finish required, use the suffix 'Y' as below

- Y=0 For natural Anodised finish
- Y=1 Black Texture, powder coated
- Y=2 PS Blue, powder coated
- Y=5 Powder coated to RAL 7035
- Y=9 Special



Top & Bottom Covers



Facia Panels

Facia Panels

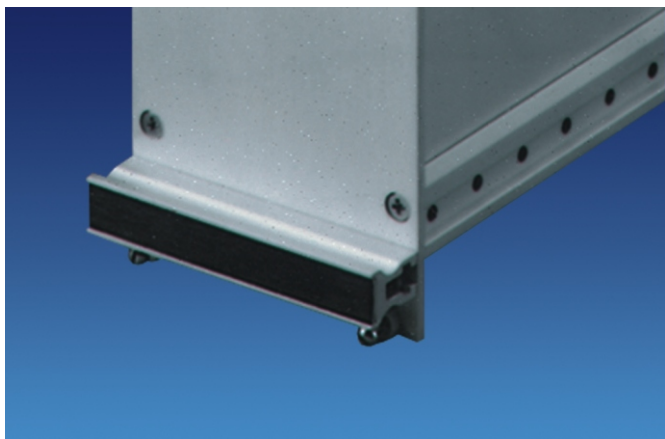
Different widths and heights of Facia Panels for use with PCB assemblies are available. These are supplied in natural anodised aluminium finish.

Facia Panel sets include the anodised Aluminium Facia Plate, Handles, Facia Bushes with M2.5 Captive Screws and PCB Holder.

For VME Facia Panels, the PCB Card Puller is included as a standard accessory.

Ordering Information

Height	Width					
	4T	4T(VME)	6T	9T	12T	18T
3U	29-7304	29-7304-01	29-7306	29-7309	29-7312	29-7318
4U	29-7404	-	29-7406	29-7409	29-7412	29-7418
5U	29-7504	-	29-7506	29-7509	29-7512	29-7518
6U	29-7604	29-7604-01	29-7606	29-7609	29-7612	29-7618



Handles for Facia Panels

Handles for Facia Panels

Facia Handle Sets consist of basic profile 82-35XX along with the Label Strip, MS Threaded Strip and fixing hardware.

Ordering Information

Handle for Facia Panel + HW 4T	29-9404
Handle for Facia Panel + HW 6T	29-9406
Handle for Facia Panel + HW 9T	29-9409
Handle for Facia Panel + HW 10T	29-9410
Handle for Facia Panel + HW 12T	29-9412
Handle for Facia Panel + HW 14T	29-9414
Handle for Facia Panel + HW 18T	29-9418
Handle for Facia Panel + HW 21T	29-9421
Handle for Facia Panel + HW 42T	29-9442
Handle for Facia Panel + HW 63T	29-9463
Handle for Facia Panel + HW 81T	29-9481
Handle for Facia Panel + HW 84T	29-9484



Connector Mounting Sets

Connector Mounting Sets

Single or Double VME Connector mounting sets for Euro cards are available - as well as special types for use with other connector families.

Ordering Information

Type of Accessory	Width	
	21T	42T
Connector Mtg set, Single Euro	29-6121-1	29-6142-1
Connector Mtg set, Double Euro	29-6321-1	29-6342-1
Connector Mtg set, General Purpose	29-6721-1	29-6742-1

Type of Accessory	Width		
	63T	81T	84T
Connector Mtg set, Single Euro	29-6163-1	29-6181-1	29-6184-1
Connector Mtg set, Double Euro	29-6363-1	29-6381-1	29-6384-1
Connector Mtg set, General Purpose	29-6763-1	29-6781-1	29-6784-1

Plastic Accessories

These include Instrument Feet, Card Guide Retainers, PCB Holders (both fixed as well as VME Pull-Out types), Insulation Strips for Mother Board mounting, Pull-Out Knobs and Facia Bushes, Hinged Brackets for Front Panels, PCB Retainer and Extractor sets, as well as other hardware.

Ordering Information

A	Feet, ABS, Screw-on type, Pair	83-1500
B	Feet, ABS, Snap-on type, Pair	83-1503
C	Feet Tilt-back ABS, Set of 4	83-1509
D	Retainer/Extractor Set, for PCB	83-3003
E	PCB Puller, 3U VME Boards	83-3009
F	PCB Puller, 6U VME Boards	83-3010
G	Hinge, Steel for Front Panels	83-3400
H	Bush, Facia (ABS) & Screw Set	83-3505
I	Retainer, Card Guide, Pkt of 100	83-3506
J	Card Guide Retainer Bkt, Pkt of 20	83-1854
K	Holder for PCB, ABS, with Mounting HW	83-5000
L	Holder, PCB, Split Type	83-5002
M	Insulation Strip, VME Motherboard Mounting	83-5004
N	Knob, Pull Out in Plated, Each	86-1007
O	Screw, Captive M2.5, Pkt of 10	86-1025
P	Bars for Card Frame Support 225mm	86-1028
Q	Bars for Card Frame Support 285mm	86-1029

